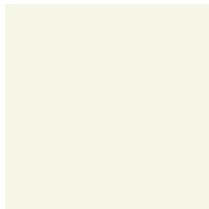


Lack
lacquer

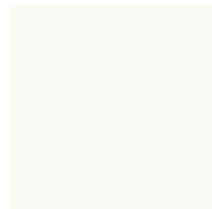
COR

Lack lacquer

Lackfarben / lacquer colours



M02
kristallweiß /
crystal white



M03
schneeweiß /
snow white



M16
elephant / elephant



M20
schwarz / black



M21
anthrazit / anthracite

Feinstruktur / fine structure



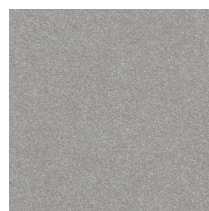
F01
schwarzbraun /
black brown



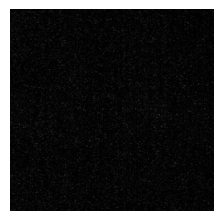
F02
platin / platinum



F03
alu / aluminium



F04
stahl / steel



F05
schwarz / black

Pulverlackfarben / powder lacquer colours

Pulverlackfarben nur verfügbar für Tischplatten bis max. 140 cm. Die Pulverbeschichtete Oberfläche zeichnet sich aufgrund der lösungsmittelfreien Verarbeitung durch eine besonders gute Ökobilanz aus. Eine Pulverbeschichtung eignet sich für stark beanspruchte Flächen, hat eine feinstrukturierte Oberfläche und eine erhöhte Kratzbeständigkeit.

Powder lacquer colours only available for table tops up to a maximum of 140 cm. Due to its solvent-free finish, the powder-coated surface has a very good ecological balance. Powder coating is particularly suitable for surfaces subject to heavy wear and tear, has a finely structured surface that is characterised not only by its feel but also by higher scratch resistance.



P01
Isolde

P02
Beton

P03
Sandbeige

P04
Vanille

P05
Tieforange



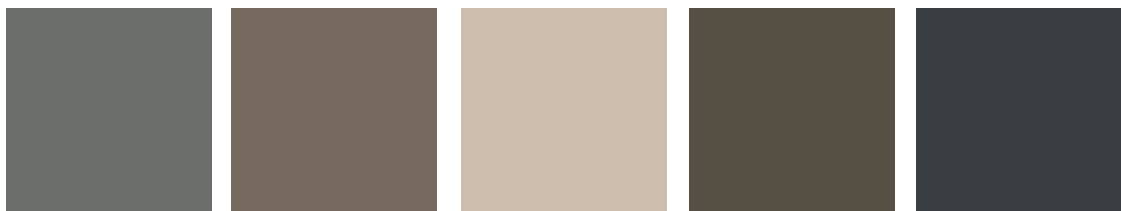
P06
Rubinrot

P07
Marineblau

P08
Pastelblau

P09
Flaschengrün

P10
Stratus Grau



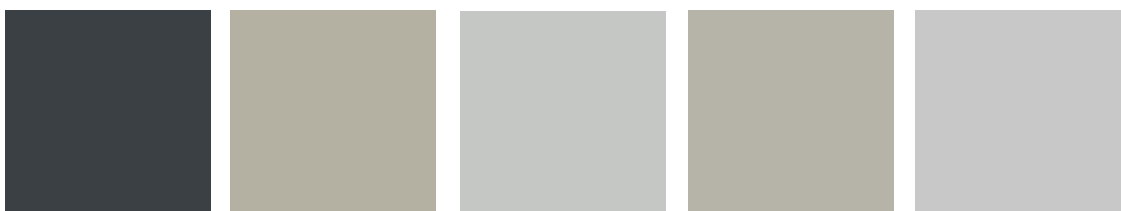
P11
Muisgrijs

P12
Shadow

P13
Tristan

P14
Lava

P15
Antraciet



P16
Schiefer

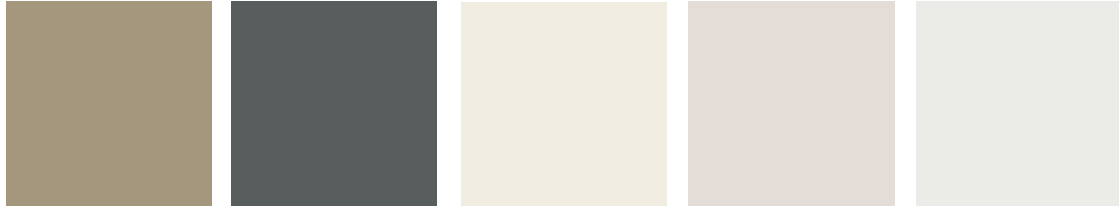
P17
Silica

P18
Lichtgrau

P19
Dakar

P20
Grijs

Pulverlackfarben / powder lacquer colours



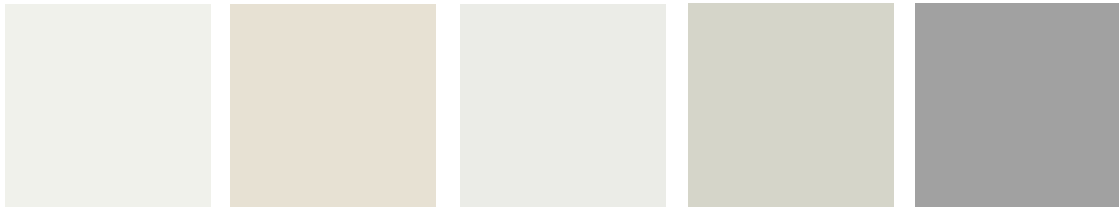
P21
Ottergrijs

P22
Basalt Grey

P23
Reinweiß

P24
Champagne

P25
Wit metallic



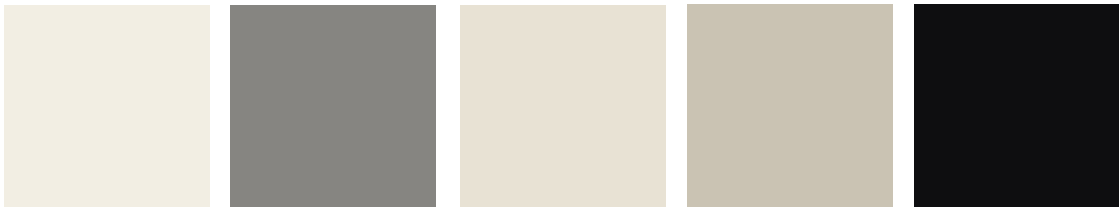
P26
Arctic White

P27
Magnolie

P28
Wit

P29
Sky

P30
Silber metallic



P31
White

P32
Sattelite Grau

P33
Wolwit

P34
Café au Lait

P35
Tiefschwarz