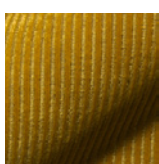


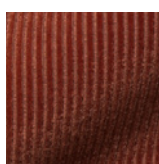
90



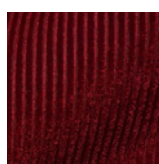
9070
bernstein / amber



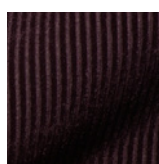
9071
curry / curry



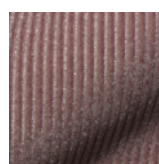
9072
kürbis / pumpkin



9073
chili / chilli



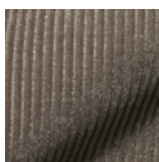
9074
merlot / merlot



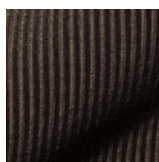
9075
altrosé /
antique pink



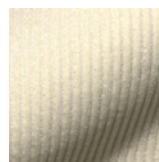
9076
cremrosé /
creme pink



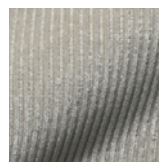
9077
nougat / nougat



9078
haselnuss /
hazelnut



9079
ecru / ecru



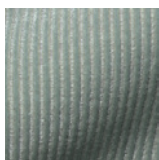
9080
hellgrau / light grey



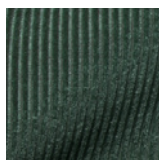
9081
schiefer / slate



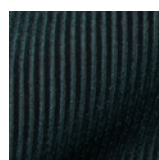
9082
betongrau /
cement grey



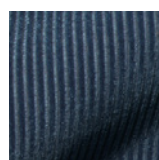
9083
zartgrün /
soft green



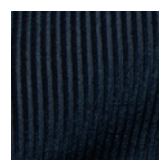
9084
waldmeistergrün /
woodruff green



9085
petrol / petrol



9086
jeansblau /
denim blue



9087
navy / navy

Material Grundschrift/
material basic layer: 83% Polyester/Polyester
17% Polyacryl/Polyacrylics

Material Flor/material pile: 100% Polyacryl/Polyacrylics

Gewicht lfd Meter/
weight per metre: 560 g

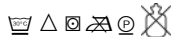
Stoffbreite/fabric width: 140 cm

Strapazierfähigkeit/
durability: starke Beanspruchung/heavy use

Lichtechtheit (1-8)/
Light fastness (1-8): 6-7

Pilling/pilling: 5

Pflege und Reinigung/
care and cleaning:



Stoffart/fabric type: Schnittpolgewebe/cut pile weave

Brandschutz/
fire protection: BS 5852 Zigarettentest, Cal. TB 117-2013,
AB2998 bestanden/BS 5852 cigarette test,
Cal. TB 117-2013, AB2998 passed

Artikelbeschreibung
Gebrauchs- und
warentypische
Eigenschaften/
article description
and wear/product
characteristics:

Synthetischer CORD-Samt mit wunderbarer
Haptik, einer fein changierenden Oberflä-
chenbrillanz und streifiger breiter Rippens-
struktur. Aufgrund der verwebten Hitex-Fasern
ist der Stoff besonders pflegeleicht, waschbar
und besitzt eine hohe Lichtechtheit und Stra-
pazierfähigkeit, ohne das chemische Zusätze
verwendet werden. Florverlagerungen sind
gewollt und verleihen dem Sitzmöbel eine be-
sondere Note und Lässigkeit. Im Gebrauch
sind Patina und Glanzstellen zu erwarten.

Synthetic CORD velvet with a wonderful
feel, a finely iridescent surface brilliance and a
stripy broad rib structure. Due to the woven
Hitex fibres, the fabric is particularly easy-ca-
re, washable and has a high light fastness and
durability without the use of chemical additi-
ves. Pile shifts are intentional and give the se-
ating furniture a special touch and casualness.
Patina and shiny spots are to be expected
when in use.



www.blauer-engel.de/uz117