



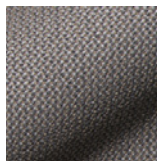
10067
carbon / carbon



10060
offwhite / offwhite



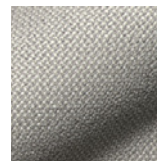
10061
macadamia /
macadamia



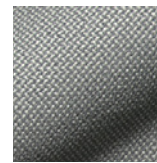
10062
grau-nougat / grey
nougat



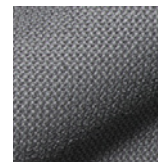
10063
walnut / walnut



10064
chalk / chalk



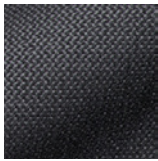
10065
zinn / zinn



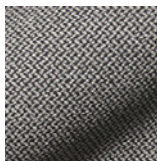
10066
fels / fels



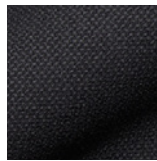
10067
carbon / carbon



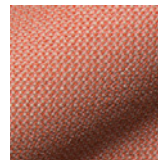
10068
asphalt / asphalt



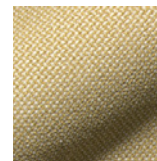
10069
pepper / pepper



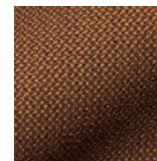
10070
black / black



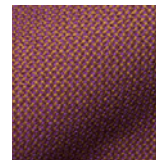
10071
grapefruit /
grapefruit



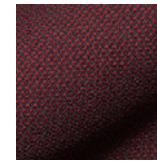
10072
hellgelb / hellgelb



10073
kupfer / copper



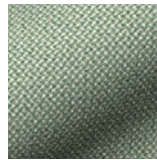
10074
violett-orange /
violet-orange



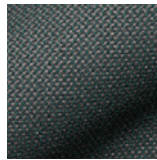
10075
rubin / rubin



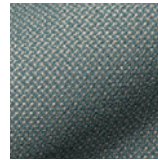
10076
forrest / forrest



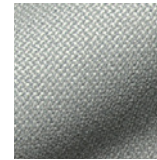
10077
hellgrün / light
green



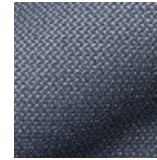
10078
grau-grün /
grey green



10079
lake / lake



10080
diamond / diamond



10081
sea / sea



10082
navy / navy

Material/material:	95% Schurwolle/Virgin wool 5% Polyamid/Polyamide	Artikelbeschreibung Gebrauchs- und warentypische Eigenschaften/ article description and wear/ product characteristics:	Ein klassischer Schurwollstoff neu interpretiert. Außergewöhnlich ist die frische Farbigkeit. Es werden verschiedene Garnfarben miteinander ver- webt, hierdurch entsteht die eigenständige Tiefen-/ Netzstruktur und das besondere multi-color Farb- spiel an der Oberfläche des Gewebes. Das verwebte Kammgarn/ Bouclégarn aus Merinowolle ist strapa- zierfähig und langlebig. Das Gewebe regeneriert sich ideal und verhindert dadurch bleibende Druck- stellen. Wolle ist schmutzabweisend und passt sich der Raumtemperatur an. A classic new wool fabric, reinterpreted. The fresh colours are remarkable. Various yarn colours are woven together, creating a distinct depth/network structure and the special multiple play of colours on the surface of the fabric. The woven worsted/bouclé yarn made of merino wool is hard-wearing and durable. The weave regenerates itself perfectly, thereby pre- venting permanent pressure points. Wool is dirtrepellent and adapts to the room temperature.
Gewicht lfd Meter/weight per metre:	900 g		
Stoffbreite/fabric width:	140 cm		
Strapazierfähigkeit/durability:	starke Beanspruchung/heavy use		
Lichtechtheit (1-8)/Light fastness (1-8):	5-6		
Pilling/pilling:	4-5		
Pflege und Reinigung/care and cleaning:	☒ ☒ ☒ ☒ ☒ ☒		
Stoffart/fabric type:	Jacquardgewebe/Jacquard weave		
Brandschutz/fire protection:	BS 5852 Crip5 Zigaretten- und Streich- holztest, Cal. TB 117-2013 bestanden/ BS 5852 Crip5 cigarette and match test, Cal. TB 117-2013, AB 2998 passed		

